

Strain sensor CL 25 (12.5/25/37.5)

- Control of material stresses
- Tensile forces
- Indirect force measurement
- Easy mounting
- Three year warranty, after market service
- Range: 12.5/25/37.5 mm



Strain gauge sensor CL 25 is assigned for strain measurement and indirect measurement of static or slow-changing forces. Together with ZEPWN electronic instrumentation the sensor can be used in labs and plants, for control of material stresses, in industrial automatics systems production supervising systems. Sensor CL 25 can be load with tensile forces.

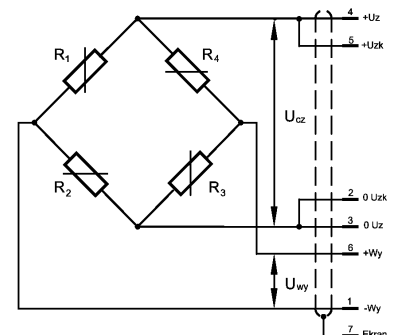
Measured strain is converted into electric signal due to metal elastic element with strain gauge full bridge.

Technical parameters

Range	[mm]	12,5; 25; 37,5
Breaking strain	[%]	10
Nonlinearity*	[%]	0,9 ÷ 1,5
Nominal supply voltage	[V]	10
Strain gauge resistance	[Ω]	350
Input resistance	[Ω]	350
Output resistance	[Ω]	350
Return of output signal to zero point after nominal load take away	[%]	≤ 0,03
Temperature range	[°C]	0 ÷ +45
Temperature effect on the sensivity	[%/10K]	≤ 0,05
Temperature effect on the zero point	[%/10K]	≤ 0,05
Nominal displacement	[mm]	0,2
Connector		O1 – gland with stay wire and cable
Protection degree		IP40
Dimensions		according to drawing
Material		steel, aluminium
Cable length		standard 1,5 m or on request

*Possible linearisation up to 0,2% by using microprocesor gauge or software

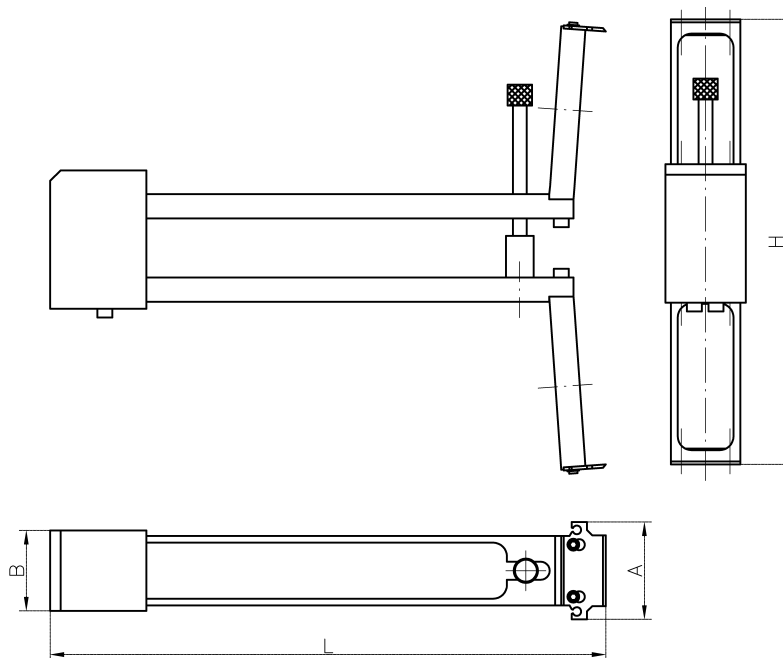
Electric diagram of CL 25



STRAIN SENSOR CL 25/12.5/25/37.5

Quality assurance:

Each sensor is detailed examined after manufacturing process.
 The producer offers 36 month warranty for the sensor and after that time also repair and calibration services.

Dimensions of CL 25:

Typ	L	H	A	B
	mm			
CL 25-12.5	88,2	78,4	28	23,2
CL 25-25	160	128,2	28	23,2
CL 25-37.5	233,5	228,6	28	23,2

Wykonania

Zakres [mm]: 12,5; 25; 37,5

Napięcie zasilania [V]: 5; 10

Długość przewodu: standardowa lub wymagana [m]

Ordering example: CL 25_12,5 – 10 – 2; sensor shaped as above, range 12,5 mm; supply voltage 10 V; cable length 2 m.

Producer: _____

Zakład Elektroniki Pomiarowej Wielkości Nielektrycznych, 05-270 Marki, ul. Kołtątaja 8
 tel./fax: (004822) 7812169, 7712411, e-mail: zepwn@zepwn.com.pl, <http://www.zepwn.com.pl>