

### Crane scales CL 161WD

- precise measurement
- measurement range from 2 t up to 100 t
- infrared remote control up to 15 meter
- storage cells operated
- indication in t / kN
- communication to PC via RS 485
- three-year warranty



The crane scales CL161 WD is a precise electronic weigher. A number of dedicated versions allows to weight up to 2 t, up to 5 t, up to 10 t or up to 20 t with standard manufactured scales. But also possible are made to order crane scales CL161WD with measuring range up to 25 t or up to 50 t or up to 100 t. The measurement results are displayed on a LED-display with 38 mm high digits. Flickering digits are signalling overloaded scales.

CL161 WD is power supplied from storage cells and can be used for eg. on an overhead crane hook and the crane scales can be used also in open space accept rainfall or snowfall.

The weighinging electronic subassembly CL 161WD can be completed with two shackles and a hook. The power supplying storage cells are situated inside of electronic subassembly. The infrared remote control makes handling the scales in the range of 15 meter easier.

CL161 WD is controled by a software, which parameters can be modified by User. The parameters are stored in EEPROM memory and turning out of power supply does not cause failure of data. The software allows to measure the value of mass affected the build-in sensor and to present this value on a 5-digit LED display. A standard indication of value is set up in ton but optional is set up in kN.

#### Technical parameters:

Measuring range	[t]	2	5	10	20	25*	50*	100*
Accuracy class		III (confirmed with a protocol from tests)						
Number of displayed graduations		1000 ÷ 20 000						
Overload		110 % of nominal range						
Type of loading		tension						
Type of display		LED						
Nonlinearity	[%]	< 0,01 (of full scale)						
Additional features		averaging, signalling of measurement's stability, zero tracking, zero adjustment, tare, calibration with calibration code and screwing out of verifying screw						
Communication protocol		Modbus RTU						
Power supply		storage cells						
Continous use		av. 50 h						
Charging time	[h]	16						
Protection degree		IP 54						

\* made to order only

# Crane scales CL161WD

Temperature range	[°C]	- 20 ÷ + 50
Remote control range		up to 15 meter
Dimensions		depend from measuring range

## Delivery range of CL161WD:

1. Crane scales CL 161WD
2. Remote control
3. Storage cells charger
4. Users guide
5. Warranty sheet
6. Deklaration of CE conformity
7. Deklaration of WE conformity

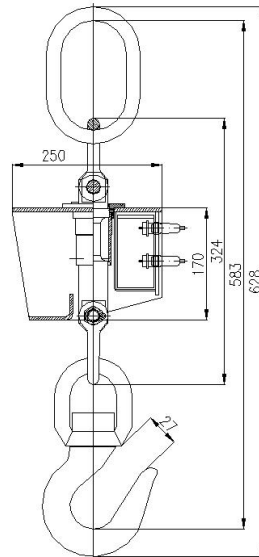
## Possible accessories:

- PC cable RS 485 3 m long or other on request
- Shacles and hook

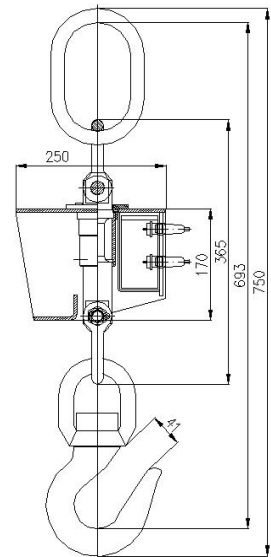
## Quality warranty

Each crane scales CL 161WD is inspected by manufacturer and calibrated with use of force gauges accuracy class 0,5 (with deviation to nominal range below 0,05%).

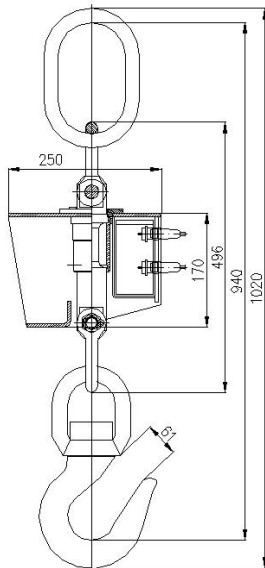
The manufacturer allows three-year warranty for CL 161 WD.



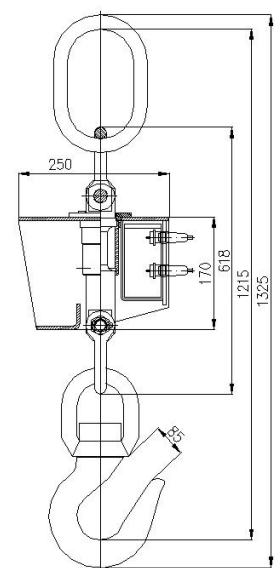
Range up to 2 t



Range up to 5 t



Range up to 10 t



Range up to 20 t

Manufacturer:

ZEPWN J. Czerwiński i Wspólnicy – spółka jawna, 05-270 Marki, ul. Kołłątaja 8, Poland  
 tel./faks: 004822 781 21 69, 004822 771 24 11, 004822 761 52 51, faks: 004822 761 52 50  
 e-mail: zepwn@zepwn.com.pl, http://www.zepwn.com.pl