

LOAD CELL CL 16M

- High accuracy and reliability
- High stability and repeatability
- Tension and compression mode
- Thin profile
- Insensitive against out of alignment forces
- Three year warranty and after sales service



Weight load cell is assigned for use in weighing systems with one or several transducers.

In use with electronic instrumentation the load cell ensure accuracy of 2. class OIML.

The load cell is working tensile and compressive. Measured load is converted into signal due to metal spring element with strain full bridge. The bridge is balanced and thermal compensated. The hermetic housing is made from stainless steel.

For electrical protection IP40 the sensor has attached a connector.

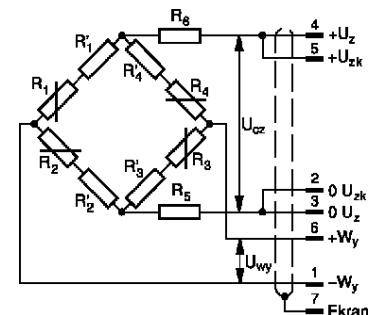
For electrical protection IP68 the sensor is equipped with stuffing on connection cable.

Specifications:

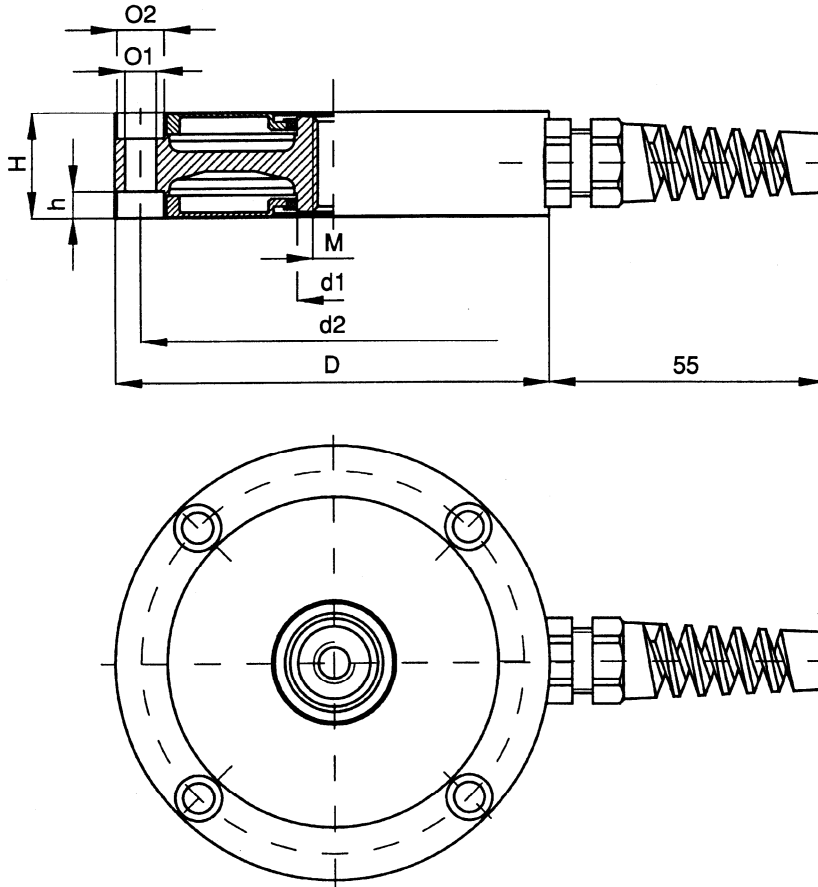
Range	[t]	0,1; 0,2; 0,5; 1, 2, 5, 10, 20, 50
Accuracy class		C2 [OIML] 2000
Total error	[%]	0,018
Return to zero	[%]	±2
Return to zero after unloading from nominal load	[%]	≤ 0,03
Strain gauge resistance	[Ω]	350
Input resistance	[Ω]	730 ±25
Output resistance	[Ω]	700 ±5
Zero point deviation	[%/30 min]	≤ 0,03
Temperature effect on the sensitivity	[%/10K]	≤ 0,05
Temperature effect on zero t	[%/10K]	≤ 0,05
Nominal voltage supply	[V]	10
Output signal	[mV/V]	1- R1; 2- R2
Input resistance	[Ω]	730 ± 25
Output resistance	[Ω]	700 ± 5
Insulation resistance	[GΩ]	1
Overload capacity	[%]	150
Operating temperature	[°C]	-20 ÷ 100
Compensated temperature range	[°C]	0 ÷ 90
Maximal strain	[mm]	0,1
Connectors		LUMBERG (Z1); O-Ring gland (O1)
Protection degree		IP40, IP66
Dimensions		as in table
Material of spring element		stainless steel
Cable length		0,5 m (standard) or optional

Designations and wiring for R1 / R2:

1 brown	-W _y
2 pink	0 U _{zk}
3 white	0 U _z
4 yellow	+U _z
5 grey	+U _{zk}
6 green	+W _y
7 black	shield



Load cell CL 16M



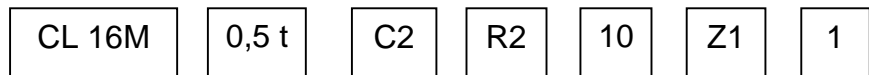
Quality assurance

Each sensor is detailed examined after manufacturing process. The producer offers 36 month warranty for the sensor and after that time also repair and calibration services.

Dimensions:

Range	D	H	M	d1	d2	O1	O2	h
kN	mm							
1	85	20	M8	13	74	6,2	9,5	5
2	85	20	M8	13	74	6,2	9,5	5
5	85	20	M8	13	74	6,2	9,5	5
10	125	28	M12	23	110	8,2	12	6
20	128	35	M24x2	40	110	10,2	17	10
50	128	35	M24x2	40	110	10,2	17	10
100	174	40	M36x3	57	145	12,2	19	12
200	180	60	M39x3	65	155	16,5	25	16
500	290	100	M72x4	113	235	20,5	31,4	20

Options:



Range [t]: 0.1; 0.2; 0.5; 1; 2; 5; 10; 25; 50

Accuracy class: C2

Configuration: R1 – 1 mV/V, R2 – 2 mV/V

Supply voltage: 10 V

Connectors: Z1 – Lumberg DIN 45329; O1 – stuffing with stay wire

Cable length: standard 0,5 m or other optional

Example of options for ordering:

CL 16M – 0,5 t – C2 – R2 – 10- Z1 – 1: load cell with dimensions as in table, range 0,5 t; accuracy class C2; sensitivity 2 mV/V; connector Lumberg; cable length 1m.

Manufacturer:

ZEPWN J. Czerwiński i Wspólnicy – s.j., 05-270 Marki, ul. Kołtątaja 8
tel./fax (00 48 22) 781 21 69, 771 24 11, e-mail: zepwn@zepwn.com.pl, <http://www.zepwn.com.pl>